

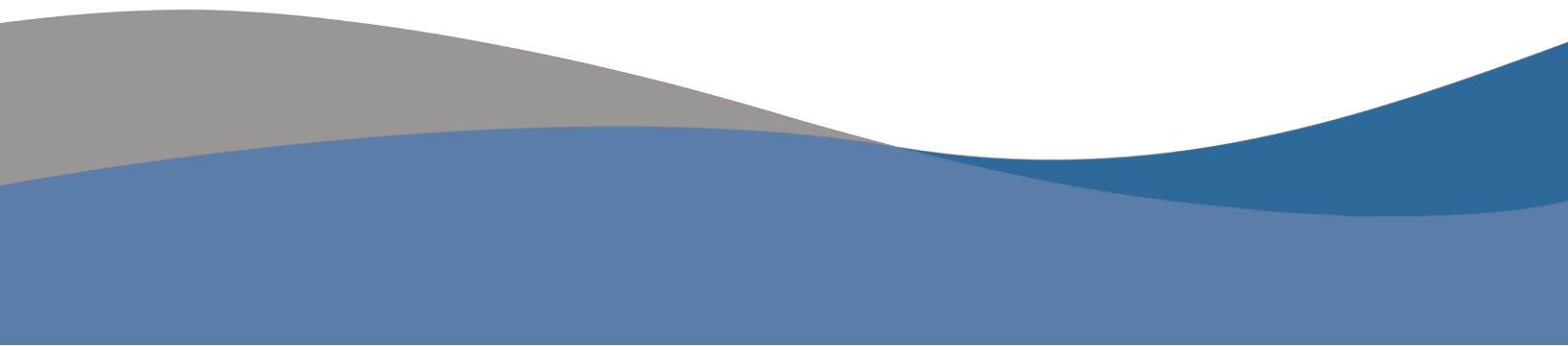


# Economic Overview

---

# Van Zandt County, Texas

---



Demographic Profile..... 3

Employment Trends ..... 5

Unemployment Rate ..... 5

Wage Trends..... 6

Cost of Living Index..... 7

Industry Snapshot..... 8

Occupation Snapshot ..... 10

Industry Clusters..... 12

Education Levels ..... 13

Gross Domestic Product ..... 14

FAQ ..... 15

# Demographic Profile

The population in Van Zandt County, Texas was 53,607 per American Community Survey data for 2013-2017.

The region has a civilian labor force of 23,791 with a participation rate of 55.5%. Of individuals 25 to 64 in Van Zandt County, Texas, 16.7% have a bachelor's degree or higher which compares with 32.3% in the nation.

The median household income in Van Zandt County, Texas is \$50,061 and the median house value is \$112,600.

## Summary<sup>1</sup>

	Percent			Value		
	Van Zandt County, Texas	Texas	USA	Van Zandt County, Texas	Texas	USA
<b>Demographics</b>						
Population (ACS)	—	—	—	53,607	27,419,612	321,004,407
Male	49.1%	49.7%	49.2%	26,307	13,616,977	158,018,753
Female	50.9%	50.3%	50.8%	27,300	13,802,635	162,985,654
Median Age <sup>2</sup>	—	—	—	43.3	34.3	37.8
Under 18 Years	23.3%	26.3%	22.9%	12,479	7,213,117	73,601,279
18 to 24 Years	7.6%	10.0%	9.7%	4,095	2,752,064	31,131,484
25 to 34 Years	10.0%	14.6%	13.7%	5,383	4,002,129	44,044,173
35 to 44 Years	11.4%	13.5%	12.7%	6,121	3,705,119	40,656,419
45 to 54 Years	13.5%	12.7%	13.4%	7,258	3,494,999	43,091,143
55 to 64 Years	14.2%	11.1%	12.7%	7,594	3,036,278	40,747,520
65 to 74 Years	11.5%	7.0%	8.6%	6,143	1,915,612	27,503,389
75 Years, and Over	8.5%	4.7%	6.3%	4,534	1,300,294	20,229,000
Race: White	93.5%	74.6%	73.0%	50,119	20,459,525	234,370,202
Race: Black or African American	2.7%	12.0%	12.7%	1,441	3,286,950	40,610,815
Race: American Indian and Alaska Native	0.6%	0.5%	0.8%	346	130,360	2,632,102
Race: Asian	0.5%	4.5%	5.4%	249	1,236,852	17,186,320
Race: Native Hawaiian and Other Pacific Islander	0.1%	0.1%	0.2%	57	23,531	570,116
Race: Some Other Race	0.7%	5.8%	4.8%	375	1,580,393	15,553,808
Race: Two or More Races	1.9%	2.6%	3.1%	1,020	702,001	10,081,044
Hispanic or Latino (of any race)	10.3%	38.9%	17.6%	5,510	10,673,909	56,510,571
<b>Population Growth</b>						
Population (Pop Estimates) <sup>4</sup>	—	—	—	56,019	28,701,845	327,167,434
Population Annual Average Growth <sup>4</sup>	0.7%	1.7%	0.7%	355	439,281	2,307,347
People per Square Mile	—	—	—	66.5	109.9	92.6
<b>Economic</b>						
Labor Force Participation Rate and Size (civilian population 16 years and over)	55.5%	64.4%	63.3%	23,791	13,473,957	161,159,470
Prime-Age Labor Force Participation Rate and Size (civilian population 25-54)	78.3%	80.2%	81.6%	14,684	8,945,583	103,761,701
Armed Forces Labor Force	0.0%	0.4%	0.4%	8	91,081	1,024,855
Veterans, Age 18-64	6.6%	5.2%	4.9%	1,999	872,423	9,667,749
Veterans Labor Force Participation Rate and Size, Age 18-64	74.5%	77.6%	75.8%	1,489	677,079	7,326,514
Median Household Income <sup>2</sup>	—	—	—	\$50,061	\$57,051	\$57,652
Per Capita Income	—	—	—	\$25,394	\$28,985	\$31,177
Mean Commute Time (minutes)	—	—	—	34.4	26.1	26.4
Commute via Public Transportation	0.1%	1.5%	5.1%	12	187,311	7,607,907
<b>Educational Attainment, Age 25-64</b>						
No High School Diploma	14.6%	16.1%	11.4%	3,844	2,287,734	19,230,541
High School Graduate	33.3%	24.7%	26.0%	8,768	3,517,552	43,784,920
Some College, No Degree	27.3%	22.4%	21.2%	7,187	3,183,316	35,803,629

## Summary<sup>1</sup>

	Percent			Value		
	Van Zandt County, Texas	Texas	USA	Van Zandt County, Texas	Texas	USA
Associate's Degree	8.2%	7.4%	9.0%	2,161	1,051,162	15,199,517
Bachelor's Degree	12.4%	19.7%	20.5%	3,268	2,808,143	34,602,913
Postgraduate Degree	4.3%	9.8%	11.8%	1,128	1,390,618	19,917,735
<b>Housing</b>						
Total Housing Units	—	—	—	23,169	10,611,386	135,393,564
Median House Value (of owner-occupied units) <sup>2</sup>	—	—	—	\$112,600	\$151,500	\$193,500
Homeowner Vacancy	2.4%	1.6%	1.7%	371	94,134	1,346,331
Rental Vacancy	8.4%	7.6%	6.1%	415	300,975	2,838,344
Renter-Occupied Housing Units (% of Occupied Units)	22.9%	38.0%	36.2%	4,428	3,579,373	42,992,786
Occupied Housing Units with No Vehicle Available (% of Occupied Units)	4.1%	5.5%	8.8%	795	517,945	10,468,418
<b>Social</b>						
Poverty Level (of all people)	14.2%	16.0%	14.6%	7,489	4,291,384	45,650,345
Households Receiving Food Stamps/SNAP	12.1%	12.7%	12.6%	2,343	1,196,016	15,029,498
Enrolled in Grade 12 (% of total population)	1.3%	1.5%	1.4%	679	398,124	4,437,324
Disconnected Youth <sup>3</sup>	4.8%	3.0%	2.7%	145	47,251	456,548
Children in Single Parent Families (% of all children)	26.2%	34.9%	34.5%	2,968	2,396,094	24,106,567
Uninsured	17.9%	18.2%	10.5%	9,464	4,916,911	33,177,146
With a Disability, Age 18-64	15.3%	9.7%	10.3%	4,623	1,613,122	20,276,199
With a Disability, Age 18-64, Labor Force Participation Rate and Size	37.4%	44.4%	41.4%	1,731	716,525	8,395,884
Foreign Born	5.0%	16.9%	13.4%	2,695	4,622,395	43,028,127
Speak English Less Than Very Well (population 5 yrs and over)	4.0%	14.1%	8.5%	2,032	3,576,480	25,654,421

Source: [JobsEQ®](#)

1. American Community Survey 2013-2017, unless noted otherwise

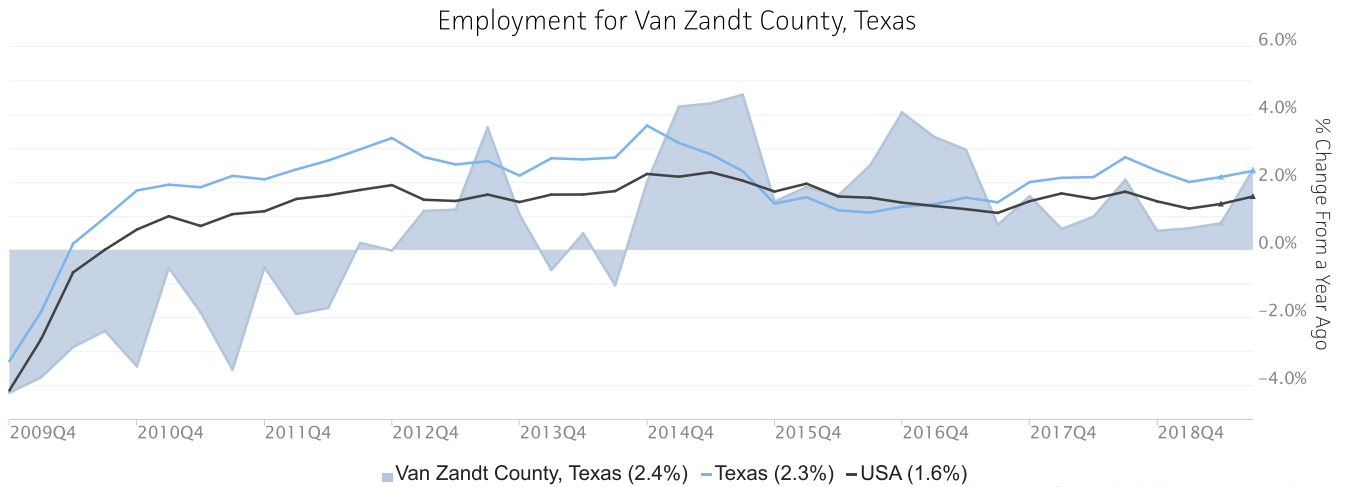
2. Median values for certain aggregate regions (such as MSAs) may be estimated as the weighted averages of the median values from the composing counties.

3. Disconnected Youth are 16-19 year olds who are (1) not in school, (2) not high school graduates, and (3) either unemployed or not in the labor force.

4. Census 2018, annual average growth rate since 2008

# Employment Trends

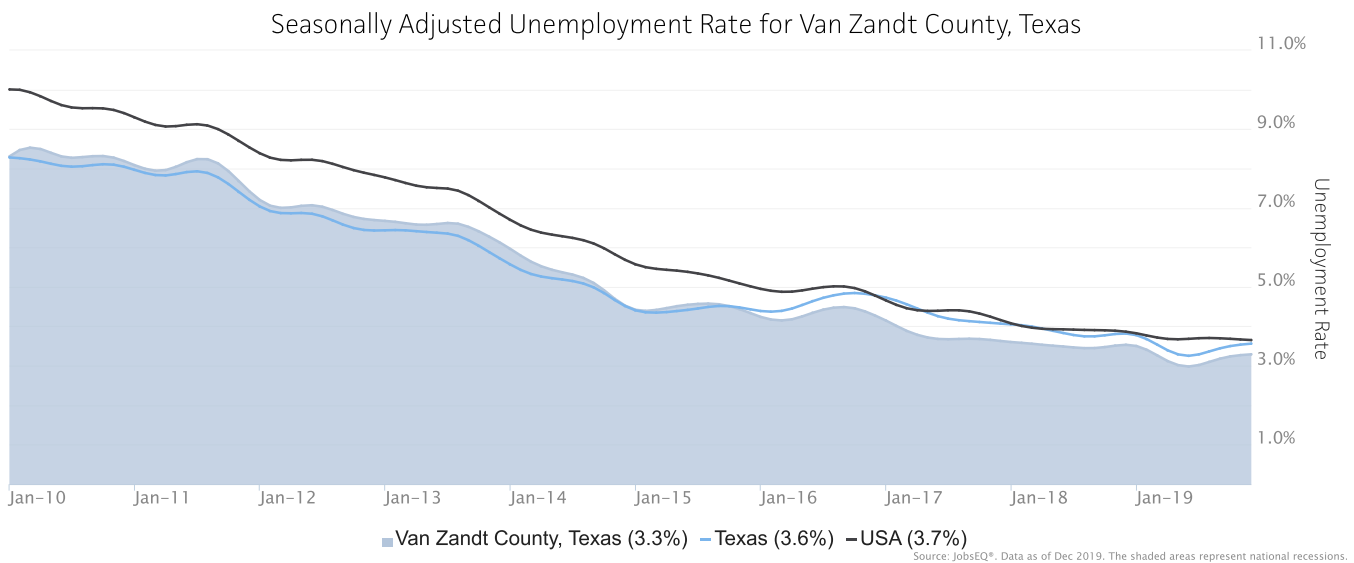
As of 2019Q3, total employment for Van Zandt County, Texas was 14,497 (based on a four-quarter moving average). Over the year ending 2019Q3, employment increased 2.4% in the region.



Employment data are derived from the Quarterly Census of Employment and Wages, provided by the Bureau of Labor Statistics and imputed where necessary. Data are updated through 2019Q1 with preliminary estimates updated to 2019Q3.

# Unemployment Rate

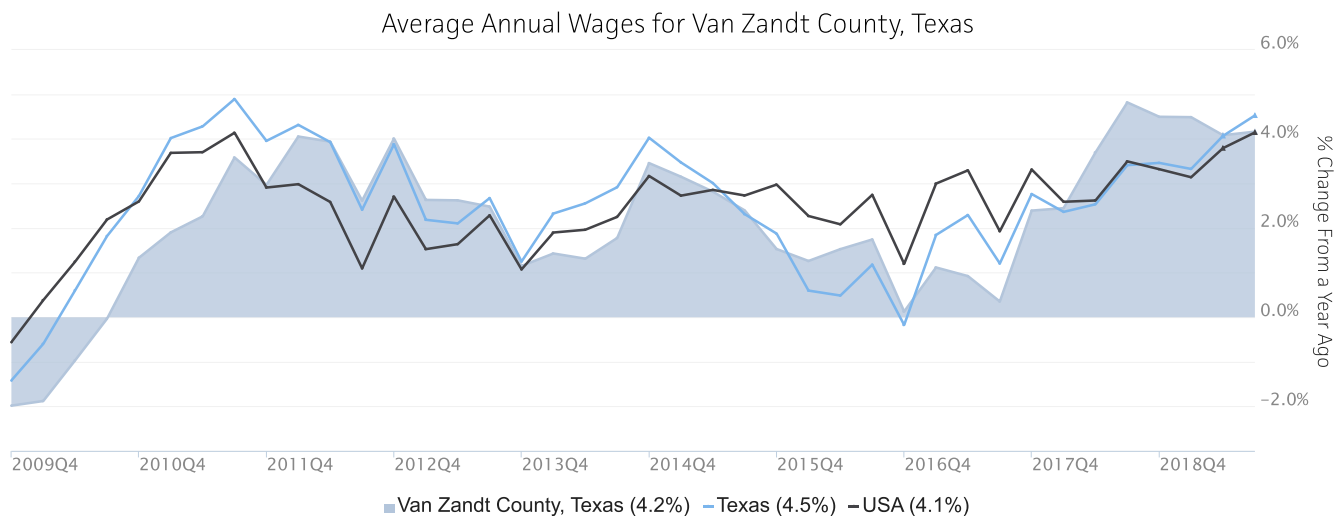
The seasonally adjusted unemployment rate for Van Zandt County, Texas was 3.3% as of December 2019. The regional unemployment rate was lower than the national rate of 3.7%. One year earlier, in December 2018, the unemployment rate in Van Zandt County, Texas was 3.5%.



Unemployment rate data are from the Local Area Unemployment Statistics, provided by the Bureau of Labor Statistics and updated through December 2019.

# Wage Trends

The average worker in Van Zandt County, Texas earned annual wages of \$34,054 as of 2019Q3. Average annual wages per worker increased 4.2% in the region over the preceding four quarters. For comparison purposes, annual average wages were \$57,681 in the nation as of 2019Q3.



Annual average wages per worker data are derived from the Quarterly Census of Employment and Wages, provided by the Bureau of Labor Statistics and imputed where necessary. Data are updated through 2019Q1 with preliminary estimates updated to 2019Q3.

# Cost of Living Index

The Cost of Living Index estimates the relative price levels for consumer goods and services. When applied to wages and salaries, the result is a measure of relative purchasing power. The cost of living is 2.5% lower in Van Zandt County, Texas than the U.S. average.

## Cost of Living Information

	Annual Average Salary	Cost of Living Index (Base US)	US Purchasing Power
Van Zandt County, Texas	\$34,054	97.5	\$34,913
Texas	\$57,901	94.1	\$61,504
USA	\$57,681	100.0	\$57,681

Source: [JobsEQ®](#)

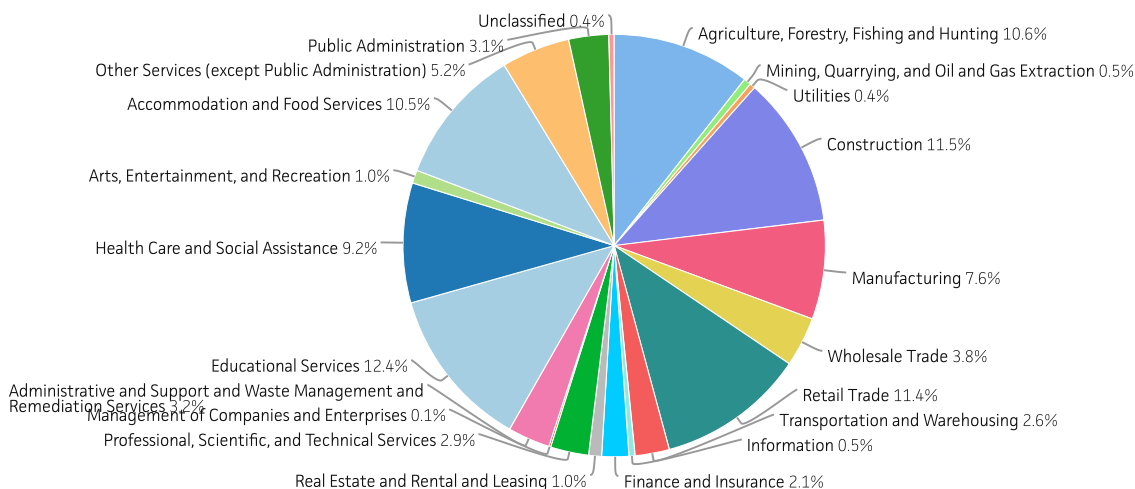
Data as of 2019Q3

Cost of Living per C2ER, data as of 2019q2, imputed by Chmura where necessary.

# Industry Snapshot

The largest sector in Van Zandt County, Texas is Educational Services, employing 1,795 workers. The next-largest sectors in the region are Construction (1,667 workers) and Retail Trade (1,646). High location quotients (LQs) indicate sectors in which a region has high concentrations of employment compared to the national average. The sectors with the largest LQs in the region are Agriculture, Forestry, Fishing and Hunting (LQ = 7.95), Construction (2.00), and Educational Services (1.52).

Total Workers for Van Zandt County, Texas by Industry



Source: JobsEQ®, Data as of 2019Q3

Employment data are derived from the Quarterly Census of Employment and Wages, provided by the Bureau of Labor Statistics and imputed where necessary. Data are updated through 2019Q1 with preliminary estimates updated to 2019Q3.

Sectors in Van Zandt County, Texas with the highest average wages per worker are Management of Companies and Enterprises (\$80,715), Utilities (\$63,684), and Wholesale Trade (\$63,429). Regional sectors with the best job growth (or most moderate job losses) over the last 5 years are Manufacturing (+333 jobs), Accommodation and Food Services (+233), and Wholesale Trade (+167).

Over the next 1 year, employment in Van Zandt County, Texas is projected to expand by 104 jobs. The fastest growing sector in the region is expected to be Health Care and Social Assistance with a +2.1% year-over-year rate of growth. The strongest forecast by number of jobs over this period is expected for Health Care and Social Assistance (+29 jobs), Construction (+22), and Accommodation and Food Services (+19).



NAICS	Industry	Current			5-Year History		1-Year Forecast				
		Empl	Avg Ann Wages	LQ	Empl Change	Ann %	Total Demand	Exits	Transfers	Empl Growth	Ann % Growth
61	Educational Services	1,795	\$31,469	1.52	51	0.6%	173	80	86	7	0.4%
23	Construction	1,667	\$45,567	2.00	147	1.9%	186	59	105	22	1.3%
44	Retail Trade	1,646	\$26,930	1.10	113	1.4%	222	97	123	3	0.2%
11	Agriculture, Forestry, Fishing and Hunting	1,537	\$15,864	7.95	6	0.1%	170	71	96	3	0.2%
72	Accommodation and Food Services	1,521	\$17,960	1.16	233	3.4%	266	109	138	19	1.3%
62	Health Care and Social Assistance	1,329	\$30,421	0.64	129	2.1%	155	62	64	29	2.1%
31	Manufacturing	1,098	\$53,247	0.92	333	7.5%	112	42	72	-3	-0.2%
81	Other Services (except Public Administration)	761	\$25,946	1.17	45	1.2%	90	40	47	3	0.5%
42	Wholesale Trade	552	\$63,429	1.00	167	7.5%	59	22	36	1	0.2%
56	Administrative and Support and Waste Management and Remediation Services	469	\$30,527	0.50	145	7.7%	59	23	31	5	1.0%
92	Public Administration	444	\$38,219	0.65	23	1.1%	43	17	23	2	0.5%
54	Professional, Scientific, and Technical Services	425	\$43,942	0.44	74	3.9%	41	14	23	5	1.1%
48	Transportation and Warehousing	382	\$56,353	0.59	-44	-2.2%	41	17	23	0	0.1%
52	Finance and Insurance	299	\$49,336	0.52	20	1.4%	29	11	17	1	0.4%
71	Arts, Entertainment, and Recreation	145	\$17,636	0.50	-3	-0.4%	22	9	11	1	0.9%
53	Real Estate and Rental and Leasing	142	\$40,227	0.57	3	0.5%	15	7	8	1	0.8%
21	Mining, Quarrying, and Oil and Gas Extraction	79	\$54,624	1.24	0	0.0%	9	3	5	1	1.3%
51	Information	67	\$38,410	0.23	-26	-6.5%	6	2	4	0	-0.3%
22	Utilities	61	\$63,684	0.82	-5	-1.7%	6	2	4	0	0.5%
99	Unclassified	58	\$37,043	3.30	56	97.5%	7	3	4	0	0.7%
55	Management of Companies and Enterprises	21	\$80,715	0.10	1	0.6%	2	1	1	0	0.7%
<b>Total - All Industries</b>		<b>14,497</b>	<b>\$34,054</b>	<b>1.00</b>	<b>1,465</b>	<b>2.2%</b>	<b>1,687</b>	<b>677</b>	<b>906</b>	<b>104</b>	<b>0.7%</b>

Source: [JobsEQ®](http://www.chmuraecon.com/jobseq)

Employment data are derived from the Quarterly Census of Employment and Wages, provided by the Bureau of Labor Statistics and imputed where necessary. Data are updated through 2019Q1 with preliminary estimates updated to 2019Q3. Forecast employment growth uses national projections adapted for regional growth patterns.

# Occupation Snapshot

The largest major occupation group in Van Zandt County, Texas is Management Occupations, employing 1,733 workers. The next-largest occupation groups in the region are Office and Administrative Support Occupations (1,574 workers) and Food Preparation and Serving Related Occupations (1,492). High location quotients (LQs) indicate occupation groups in which a region has high concentrations of employment compared to the national average. The major groups with the largest LQs in the region are Farming, Fishing, and Forestry Occupations (LQ = 3.14), Management Occupations (1.92), and Construction and Extraction Occupations (1.68).

Occupation groups in Van Zandt County, Texas with the highest average wages per worker are Management Occupations (\$91,500), Architecture and Engineering Occupations (\$79,300), and Legal Occupations (\$74,200). The unemployment rate in the region varied among the major groups from 1.1% among Management Occupations to 6.4% among Farming, Fishing, and Forestry Occupations.

Over the next 1 year, the fastest growing occupation group in Van Zandt County, Texas is expected to be Personal Care and Service Occupations with a +2.2% year-over-year rate of growth. The strongest forecast by number of jobs over this period is expected for Food Preparation and Serving Related Occupations (+19 jobs) and Construction and Extraction Occupations (+14). Over the same period, the highest separation demand (occupation demand due to retirements and workers moving from one occupation to another) is expected in Food Preparation and Serving Related Occupations (266 jobs) and Sales and Related Occupations (202).

Van Zandt County, Texas, 2019q3<sup>1</sup>

SOC	Occupation	Current				5-Year History				1-Year Forecast				
		Empl	Avg Ann Wages <sup>2</sup>	LQ	Unempl	Unempl Rate	Online Job Ads <sup>3</sup>	Empl Change	Ann %	Total Demand	Exits	Transfers	Empl Growth	Ann % Growth
11-0000	Management	1,733	\$91,500	1.92	20	1.1%	20	19	0.2%	137	77	54	7	0.4%
43-0000	Office and Administrative Support	1,574	\$33,700	0.76	90	2.9%	62	136	1.8%	172	81	92	-1	-0.1%
35-0000	Food Preparation and Serving Related	1,492	\$21,800	1.20	124	5.1%	108	213	3.1%	286	120	146	19	1.3%
41-0000	Sales and Related	1,447	\$32,800	1.01	92	4.1%	127	150	2.2%	205	89	113	4	0.3%
25-0000	Education, Training, and Library	1,266	\$38,300	1.56	34	2.4%	14	55	0.9%	113	54	53	7	0.5%
47-0000	Construction and Extraction	1,117	\$40,800	1.68	82	4.8%	12	103	2.0%	133	40	78	14	1.3%
51-0000	Production	815	\$33,900	0.94	58	3.4%	19	186	5.3%	87	32	57	-2	-0.2%
53-0000	Transportation and Material Moving	741	\$32,900	0.74	64	3.9%	75	28	0.8%	92	36	53	4	0.5%
49-0000	Installation, Maintenance, and Repair	645	\$44,400	1.16	30	2.2%	27	87	3.0%	69	23	40	6	0.9%
37-0000	Building and Grounds Cleaning and Maintenance	617	\$23,200	1.23	39	4.2%	22	150	5.7%	81	36	40	5	0.9%
39-0000	Personal Care and Service	606	\$22,400	0.95	37	3.7%	40	143	5.5%	106	49	44	13	2.2%
29-0000	Healthcare Practitioners and Technical	437	\$63,600	0.53	14	1.3%	44	40	1.9%	32	12	13	6	1.5%
13-0000	Business and Financial Operations	382	\$63,000	0.50	11	2.3%	20	70	4.1%	38	12	23	3	0.8%
45-0000	Farming, Fishing, and Forestry	291	\$24,600	3.14	19	6.4%	n/a	28	2.0%	45	11	33	1	0.4%
31-0000	Healthcare Support	289	\$26,400	0.73	21	2.6%	33	-47	-3.0%	41	18	17	6	2.0%
21-0000	Community and Social Service	232	\$45,800	0.95	4	1.8%	16	9	0.8%	30	10	16	4	1.5%
33-0000	Protective Service	227	\$39,200	0.73	9	2.1%	5	9	0.8%	24	11	12	1	0.6%

### Van Zandt County, Texas, 2019q3<sup>1</sup>

SOC	Occupation	Current						5-Year History		1-Year Forecast				
		Empl	Avg Ann Wages <sup>2</sup>	LQ	Unempl	Unempl Rate	Online Job Ads <sup>3</sup>	Empl Change	Ann %	Total Demand	Exits	Transfers	Empl Growth	Ann % Growth
27-0000	Arts, Design, Entertainment, Sports, and Media	177	\$39,100	0.68	4	2.5%	6	1	0.2%	18	8	9	1	0.4%
17-0000	Architecture and Engineering	161	\$79,300	0.65	6	2.1%	5	57	9.2%	13	4	8	1	0.8%
15-0000	Computer and Mathematical	129	\$68,800	0.30	3	1.9%	6	18	3.1%	10	2	6	1	1.1%
23-0000	Legal	70	\$74,200	0.58	1	1.3%	n/a	1	0.3%	5	2	2	0	0.7%
19-0000	Life, Physical, and Social Science	48	\$61,500	0.42	1	2.0%	3	9	4.0%	5	1	3	0	0.7%
<b>Total - All Occupations</b>		<b>14,497</b>	<b>\$38,200</b>	<b>1.00</b>	<b>764</b>	<b>3.3%</b>	<b>664</b>	<b>1,465</b>	<b>2.2%</b>	<b>1,744</b>	<b>728</b>	<b>912</b>	<b>104</b>	<b>0.7%</b>

Source: [JobsEQ®](#)

Data as of 2019Q3 unless noted otherwise

Note: Figures may not sum due to rounding.

1. Data based on a four-quarter moving average unless noted otherwise.

2. Wage data are as of 2018 and represent the average for all Covered Employment

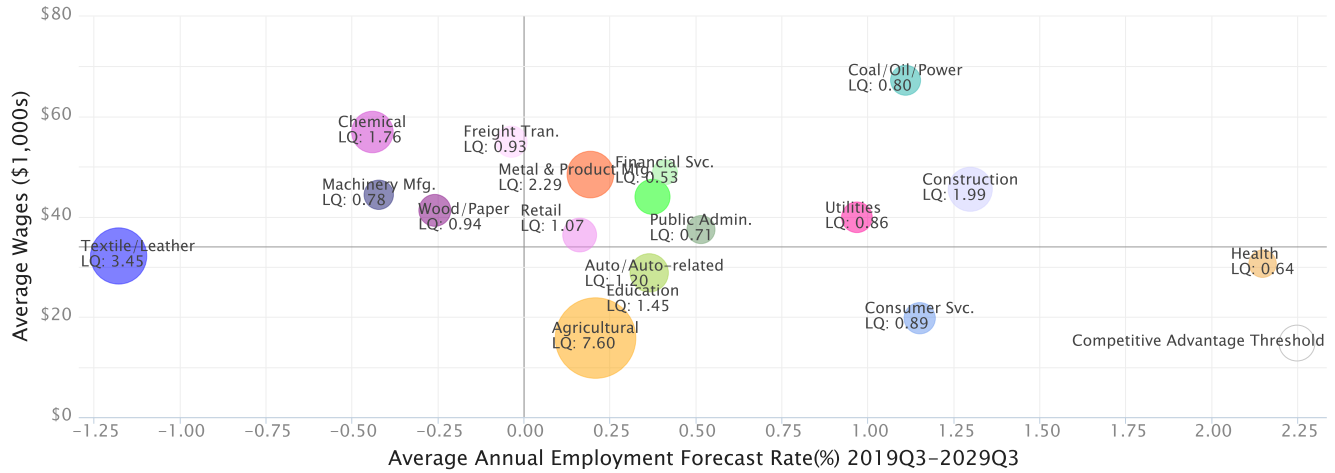
3. Data represent found online ads active within the last thirty days in the selected region; data represents a sampling rather than the complete universe of postings. Ads lacking zip code information but designating a place (city, town, etc.) may be assigned to the zip code with greatest employment in that place for queries in this analytic. Due to alternative county-assignment algorithms, ad counts in this analytic may not match that shown in RTI (nor in the popup window ad list).

Occupation employment data are estimated via industry employment data and the estimated industry/occupation mix. Industry employment data are derived from the Quarterly Census of Employment and Wages, provided by the Bureau of Labor Statistics and currently updated through 2019Q1, imputed where necessary with preliminary estimates updated to 2019Q3. Wages by occupation are as of 2018 provided by the BLS and imputed where necessary. Forecast employment growth uses national projections from the Bureau of Labor Statistics adapted for regional growth patterns.

# Industry Clusters

A cluster is a geographic concentration of interrelated industries or occupations. The industry cluster in Van Zandt County, Texas with the highest relative concentration is Agricultural with a location quotient of 7.60. This cluster employs 1,529 workers in the region with an average wage of \$15,822. Employment in the Agricultural cluster is projected to expand in the region about 0.2% per year over the next ten years.

Industry Clusters for Van Zandt County, Texas as of 2019Q3



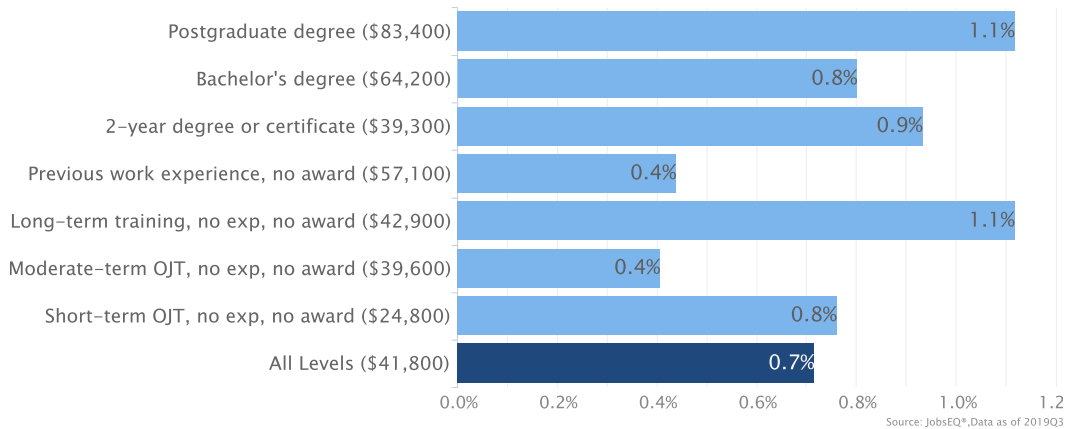
Source: JobsEQ®, Data as of 2019Q3

Location quotient and average wage data are derived from the Quarterly Census of Employment and Wages, provided by the Bureau of Labor Statistics, imputed where necessary, and updated through 2019Q1 with preliminary estimates updated to 2019Q3. Forecast employment growth uses national projections from the Bureau of Labor Statistics adapted for regional growth patterns.

# Education Levels

Expected growth rates for occupations vary by the education and training required. While all employment in Van Zandt County, Texas is projected to grow 0.7% over the next ten years, occupations typically requiring a postgraduate degree are expected to grow 1.1% per year, those requiring a bachelor's degree are forecast to grow 0.8% per year, and occupations typically needing a 2-year degree or certificate are expected to grow 0.9% per year.

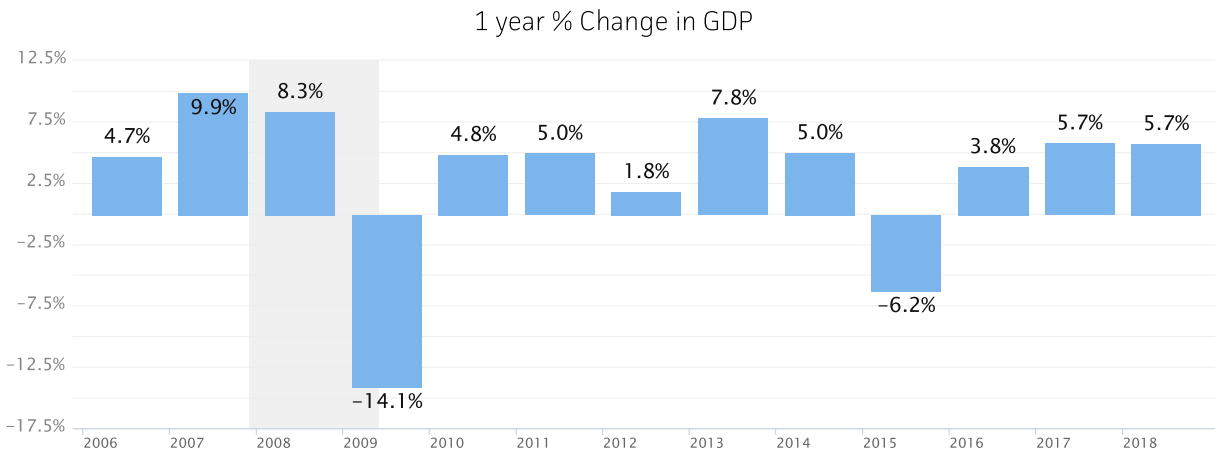
Annual Average Projected Job Growth by Training Required for Van Zandt County, Texas



Employment by occupation data are estimates as of 2019Q3. Education levels of occupations are based on BLS assignments. Forecast employment growth uses national projections from the Bureau of Labor Statistics adapted for regional growth patterns.

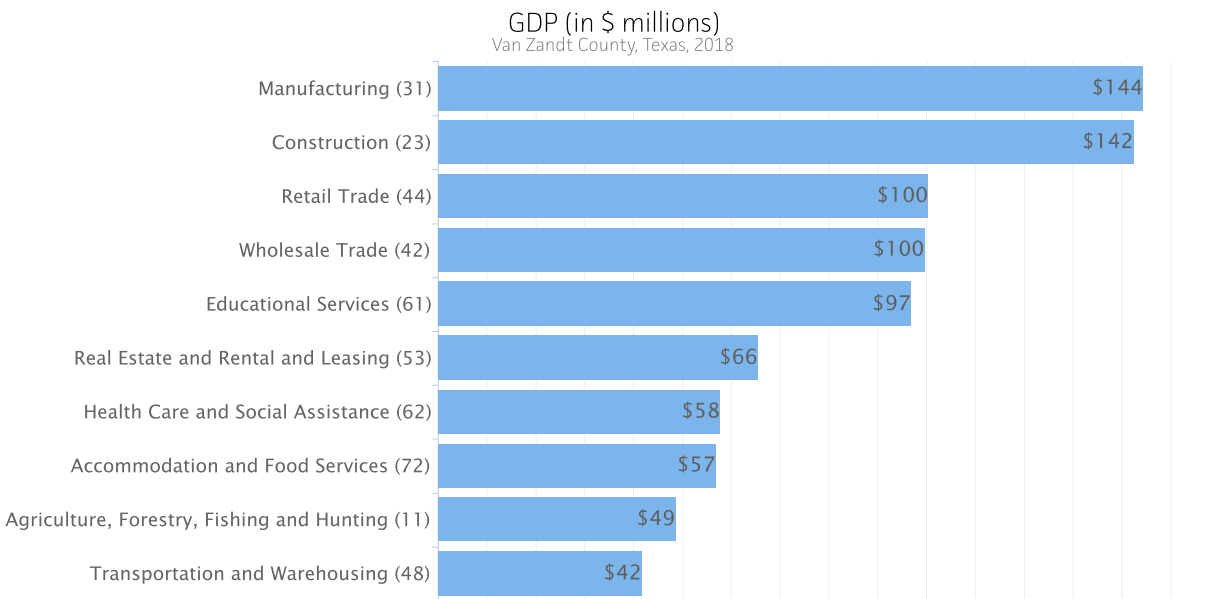
# Gross Domestic Product

Gross Domestic Product (GDP) is the total value of goods and services produced by a region. In 2018, nominal GDP in Van Zandt County, Texas expanded 5.7%. This follows growth of 5.7% in 2017. As of 2018, total GDP in Van Zandt County, Texas was \$1,090,659,000.



Gross Domestic Product data are provided by the Bureau of Economic Analysis, imputed by Chmura where necessary, updated through 2018.

Of the sectors in Van Zandt County, Texas, Manufacturing contributed the largest portion of GDP in 2018, \$144,384,000. The next-largest contributions came from Construction (\$142,415,000); Retail Trade (\$100,314,000); and Wholesale Trade (\$99,571,000).



Gross Domestic Product data are provided by the Bureau of Economic Analysis, imputed by Chmura where necessary, updated through 2018.

# FAQ

## What is a location quotient?

A location quotient (LQ) is a measurement of concentration in comparison to the nation. An LQ of 1.00 indicates a region has the same concentration of an industry (or occupation) as the nation. An LQ of 2.00 would mean the region has twice the expected employment compared to the nation and an LQ of 0.50 would mean the region has half the expected employment in comparison to the nation.

## What is separation demand?

Separation demand is the number of jobs required due to separations—labor force exits (including retirements) and turnover resulting from workers moving from one occupation into another. Note that separation demand does not include all turnover—it does not include when workers stay in the same occupation but switch employers. The total projected demand for an occupation is the sum of the separation demand and the growth demand (which is the increase or decrease of jobs in an occupation expected due to expansion or contraction of the overall number of jobs in that occupation).

## What is a cluster?

A cluster is a geographic concentration of interrelated industries or occupations. If a regional cluster has a location quotient of 1.25 or greater, the region is considered to possess a competitive advantage in that cluster.

## What is the difference between industry wages and occupation wages?

Industry wages and occupation wages are estimated via separate data sets, often the time periods being reported do not align, and wages are defined slightly differently in the two systems (for example, certain bonuses are included in the industry wages but not the occupation wages). It is therefore common that estimates of the average industry wages and average occupation wages in a region do not match exactly.

## What is NAICS?

The North American Industry Classification System (NAICS) is used to classify business establishments according to the type of economic activity. The NAICS Code comprises six levels, from the “all industry” level to the 6-digit level. The first two digits define the top level category, known as the “sector,” which is the level examined in this report.

## What is SOC?

The Standard Occupational Classification system (SOC) is used to classify workers into occupational categories. All workers are classified into one of over 820 occupations according to their occupational definition. To facilitate classification, occupations are combined to form 23 major groups, 96 minor groups, and 449 occupation groups. Each occupation group includes detailed occupations requiring similar job duties, skills, education, or experience.

## About This Report

This report and all data herein were produced by JobsEQ®, a product of Chmura Economics & Analytics. The information contained herein was obtained from sources we believe to be reliable. However, we cannot guarantee its accuracy and completeness.